

RECODE WITH THE BREDESEN PROTOCOL

Type 1.5 Glycotoxic

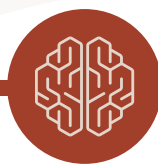
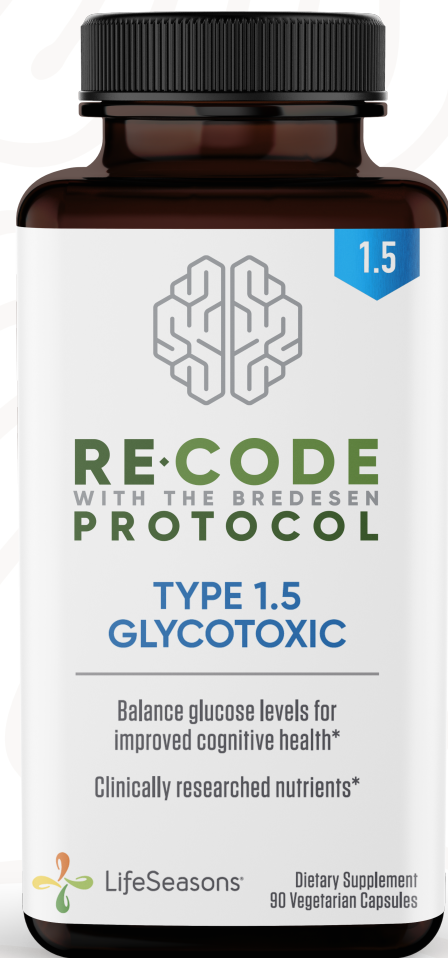
How It Works

ReCODE Protocol Type 1.5 Glycotoxic has been designed to provide support for individuals on the Bredesen Protocol who have been identified as Type 1.5 Glycotoxic on the ReCODE Report.

ReCODE Protocol Type 1.5 Glycotoxic offers blood sugar support by promoting glucose transport to cells, which can be converted to energy. Type 1.5 is a combination of ReCODE Type 1 and Type 2. High levels of glucose and insulin impede utilization of cerebral glucose. This formula has the potential to help with energy levels and stimulate blood flow as well as helping to balance glucose to optimize fuel to the brain.*

Studies show that prolonged insulin resistance, as well as inflammation, could be harmful to blood vessels in the brain, impacting how effective oxygen-rich blood flows throughout the body.

Everyone is different, and results will vary from person to person. The key is to maintain consistent use every day to see the best results.



Features & Benefits

Helps support healthy blood sugar for optimal brain health.*

Supports memory and oxygen circulation throughout the body.

Helps maintain blood glucose levels already within normal range.*



ReCODEsupport.com | 801.308.8001



Promotes Healthy Blood Sugar*

Chromium

A fat and water soluble mineral that promotes normal cellular energy production to maintain blood sugar levels already within the normal range.*

Cinnamon (Ceylon Bark)

This ingredient supports normal levels of glucose, triglycerides, and cholesterol by mimicking insulin and facilitating glucose transport to cells.*

Gymnema sylvestre

An extract that could be beneficial in managing sugar cravings, blocking glucose absorption and supporting normal blood glucose levels.*



Supports Your Natural Anti-Inflammatory Response*

Alpha-Lipoic Acid

A fat and water soluble antioxidant that assists cells in making energy, improving nerve function and reducing signs of aging. It has also been shown to soothe the symptoms associated with inflammation.*

Mirtoselect® Bilberry

Mirtoselect® is the most studied bilberry extract on the market. Most commonly, it has been used to support eye health. It can also encourage a healthy inflammation response and improve oxygen and blood delivery.*

Holy Basil

An herb that has been shown to support blood glucose levels and a healthy inflammatory response. It could also improve the body's response to stress and promote a calm mood.*



Stimulates Blood Circulation*

Butcher's Broom

An herb that supports circulation by strengthening the integrity of blood vessels and increasing blood flow to the heart. It has also been shown to lessen tension and promote a healthy inflammation response around lower legs and ankles.*

Gotu Kola

A plant that supports memory by increasing oxygen intake and blood circulation. It has also been shown to help with tiredness and blood flow.*

Vanadium

A trace mineral that mimics insulin and supports glucose transport within cells.*



Type 1.5 Glycotoxic

Ingredients You Can Trust

How to take



3 Capsules



With Food



Daily

Ingredients

Supplement Facts

Serving Size: 3 capsules daily
Servings per container: 30

| | Amount per serving | % Daily Values** |
|---|-----------------------|---------------------|
| Chromium (as chromium niacinate) | 800 mcg | 667% |
| Fenugreek seed extract (<i>Trigonella foenum -graecum</i>) (85% [425 mg] dietary fiber) (Fenulife™) | 500 mg | † |
| Gymnema leaf extract (<i>Gymnema sylvestre</i>) (25% [100 mg] gymnemic acids) | 400 mg | † |
| Cinnamon bark (<i>Cinnamomum verum</i>) (Ceylon) | 90 mg | † |
| Bilberry fruit extract (<i>Vaccinium myrtillus</i>) (36% [27 mg] anthocyanosides) (Mirtoselect®) | 75 mg | † |
| Butchers Broom root extract (<i>Ruscus aculeatus</i>) (10% [7.5 mg] ruscogenins) | 75 mg | † |
| Gotu Kola aerial extract (<i>Centella asiatica</i>) (10% [7.5 mg] triterpenes) | 75 mg | † |
| Alpha Lipoic Acid | 50 mg | † |
| Bitter Melon fruit extract (<i>Momordica charantia</i>) (7.5% [3.75 mg] bitters) | 50 mg | † |
| Banaba leaf extract (<i>Lagerstroemia speciosa</i>) (2% [1 mg] corosolic acid) | 50 mg | † |
| Holy Basil leaf extract (<i>Ocimum sanctum</i>) (2.5% [625 mg] ursolic and oleanolic acids) | 25 mg | † |
| Vanadium (as vanadyl sulfate) | 200 mcg | † |

† Daily Values not established.

**Percent Daily Values are based on a 2,000 calorie diet

Other Ingredients: Hypromellose (vegetable cellulose), silica, and rice bran.



ReCODEsupport.com | 801.308.8001